



# EASEBOURNE C.E. PRIMARY SCHOOL NEWSLETTER

6<sup>th</sup> November, 2020

## Dates for the next 2 weeks

<b>Tuesday 10<sup>th</sup> November</b>	Visit to Hedgehogs Class by Rev. Derek Welsman	<b>pm</b>
<b>Wednesday 11<sup>th</sup> November</b>	Otters Class to St. Mary's Church – Remembrance	<b>am</b>
<b>Friday 13<sup>th</sup> November</b>	Children In Need – Wear something spotty for a £1 donation	
<b>w/c Monday 16<sup>th</sup> November</b>	Odd Sock Day (Monday) – Wear odd socks to school to support anti-bullying week	

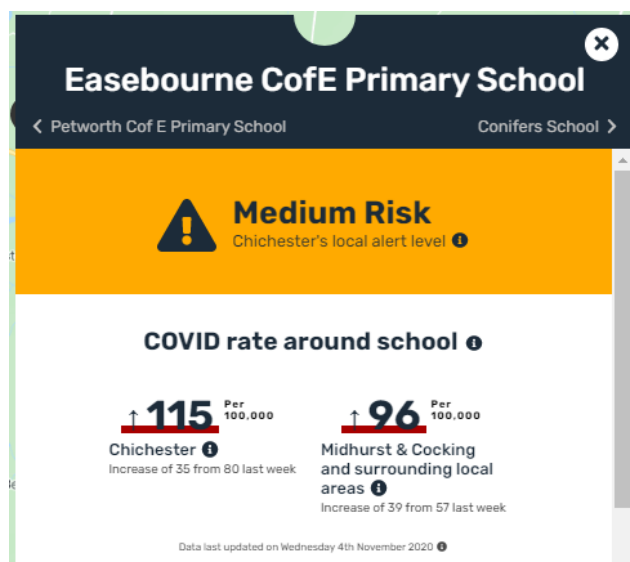
## A Word from the Head

### COVID-19

You should all have received an e-mail on Wednesday, outlining changes that have been put in place this week with the second lockdown. Following two meetings with staff today, the risk assessment will be altered over the weekend to incorporate these new changes. This can be found on the school's website.

### Clubs

Some parents have questioned why clubs have been cancelled. In this, we are simply following official advice to close out-of-school activities that are not being primarily used by parents for childcare. As a result, whilst we are maintaining our Wraparound Provision, we are suspending out-of-hours clubs. I am sorry that this will cause inevitable inconvenience to some families.



## Working Together – Key Messages

As you can see from the insert, the COVID rate in the local area continues to rise. Part of Wednesday's e-mail also reiterated some key messages about how we can work together to reduce the spread of the virus. Below are those brief key messages with a few others that arose from staff discussion. All are designed to protect you, your child and everyone else in the community. I do hope you will take the time to read these.

- Only **one adult** should drop off or pick up.
- Only enter the school building when strictly necessary and by prior arrangement. If you do need to enter the building, please ensure that you **wear a mask and/or a visor**.
- Keep your child **by your side** at drop-off and pick-up.
- Use the lines as your guide to **keep a social distance** from other parents/carers and their children, particularly if the children are from different Bubbles. (We will refresh these next week so they are more obvious.)
- Line up at drop-off and pick-up at the right time for your class. If you drive but arrive early, please **stay in your car** until the time for your child's class.
- If you are in the drop-off zone and using it for the correct purpose you should not need to stand on the pavement causing an obstruction or the mingling of Bubbles.
- **Be on time** at the start of the day. If you are late, drop your child at the front of the school but do not come in with them.

- Do not come back into school with **forgotten items** unless we ask you to; let us know and we will ensure the situation is managed.

### Family Health Situation

Finally, we all, parents, carers and staff alike, have a moral duty to keep the school informed about our health and our family's health with respect to COVID-19.

Please tell us immediately if you or a family member

- Has any of the COVID-19 symptoms
- Has had close contact with somebody who has any of the COVID-19 symptoms
- Are trying to get a test
- Are waiting for test results
- Have received test results.

### School Council

Our school council met for the first time this week with Mr Culley and Mrs Hulbert. They fed back the results of their class discussions in which children had identified different types of antisocial and prosocial behaviour. This is part of the school's review of its behaviour policy this year.

Our Year 6 pupils also decided amongst themselves who would take each of the three key officer roles – Chair, Secretary and Treasurer. They are due to meet next week virtually with a representative of a playground equipment firm as they begin to plan how to best spend the bulk of the school's PE & Sport Premium money.



Congratulations to all our school councillors: Sam (Chair), Cecily (Secretary), Charlie H (Treasurer), Ruby and Elizabeth (Y5), Florence and Rhylie (Y4), Amelie and Noah (Y3D), Tula and Alex (Y3H), Nora and Carlo (Y2) and Miriam and Alfie (Y1).

### Poetry Recitation Competition

Congratulations to all of the children who learnt a poem for this year's poetry recitation competition and thanks to parents and carers for supporting them at home. The results were as follows:

	Winner	Runner-up	Highly Commended
YR (Dragonflies)	Tilly	Ajay	Ava Louis Rory
Y1 (Hedgehogs)	Eliza	Lily	Oscar
Y2 (Squirrels)	Nora	Florence	
Y3 (Rabbits)	Alais	Dylan Tula	Rosie D
Y4 (Badgers)	Nellie		
Y5 (Foxes)	Jessica	Ruby L	
Y6 (Otters)	Sam	Tabitha	Ava

The overall KS1 Winner was Eliza, the overall LKS2 winner was Nellie and the overall UKS2 winner was Jessica. The overall winner of the competition was Nellie.

The ten placed KS2 children will be invited to enter the national Poetry By Heart competition, learning a second poem. The winner from this section will be put forward to represent the school. We also intend to record their performances of the two poems so that they can be enjoyed by the rest of the school.

Congratulations, too, to Harvey and Oscar who sent in a great video of their performance of 'The Boneyard Rap' by Wes Magee.

Our sincere thanks to judges, Jo Lorimer-Green, Tessa Craddock and Diana Hill for giving up their day to be judges in the competition.

### The Rotary Club Young Writer Competition

Congratulations go to Ruby L in Year 5, who has been recognised by the Midhurst & Petworth Rotary Club, for winning last year's writing competition. Ruby's poem was judged as the best entry from our school linked to the title 'Connections'.

Wednesday 11th December 2019

### Connections

*Connect, I connect with my family the most, they're the BEST thing I ever had.*

*Occasionally we are grumpy but actually inside we still love each other.*

*Now, I love my family and I thank my family for what they've done - you should too.*

*Nice; nobody is always nice but everybody should try.*

*Everybody should love each other in a family or you're not really together, are you?*

*Caring, that's what makes a family – if you don't show care you don't have love and that's not a family.*

*Today is another normal day where me and my family are working hard but at the end of the day we are coming together.*

By Ruby L Year 4 Badgers

### Pupil Goes MAD!

It was lovely to hear about a pupil going MAD and Making A Difference last weekend. Rosa (Y4) took part in a 5k run/walk and raised a massive £275 for the charity, Dementia Support! This is no mean feat for an eight year old and she did it during a torrential downpour. Rosa had a support team of parents plus her sister, Cecily, encouraging from her bicycle. Well done, Rosa!



### Children In Need

This year, Children in Need is on Friday 13<sup>th</sup> November.

Children will be able to come to school wearing home clothes, preferably something spotty and Pudsey ears, if owned, for a donation of £1.00.



### Anti-Bullying Week (w/b 16<sup>th</sup> November)

On Monday 16<sup>th</sup> November, the children can come to school wearing odd socks to support anti-bullying week. We are not treating this as a fundraiser, simply a graphic way for the children (and staff) to join together to show that bullying is not okay at Easebourne Primary School. It stands to reason that children might want to make this message clear by wearing eye-catching and possibly clashing socks!



### Individual School Photographs

This week your child should have come home with their individual school photograph proof. **Ideally please order your photos online** at [www.smileyellow.com](http://www.smileyellow.com) using the password found on your proof card. However, if this is not possible the proof cards can be returned to school with the correct money or cheque made payable to Yellow. There is a box for returned photos in the front foyer. The closing date for orders is Tuesday 17<sup>th</sup> November.

### Scholastic Book Club

This term's Scholastic Book Club is up and running and your child should bring home the latest catalogue today. For every £1 you spend on books, our school will earn 20p in Scholastic Rewards to purchase books for our school library. The deadline for orders is Friday 27<sup>th</sup> November.

### TIGHT WRITE 38

Using no more than

**50 WORDS**

can you write about this image?

Named entries should be sent in to Mr Culley by Thursday 26<sup>th</sup> November at the latest.



## House Update

	Green	Yellow	Blue	Red
Week 1 and 2 House Points	4	3	2	1
Week 3 House Points	4	3	2	1
Week 4 House Points	3	3	4	1
Week 5 House Points	1	3	4	3
Summer Reading Challenge	3		1	4
Week 6 House Points	2	4	3	2
Week 7 House Points	1	4	4	2
Poetry Competition	21	25	24	20
Week 8 House Points	4	2	4	1
Total	43	47	48	35

## EASEBOURNE PTFA NEWS

### IMPORTANT ANNOUNCEMENT FROM YOUR PTFA

- 1) The PTFA bank balance is looking pretty low at the moment due to the inability to hold our usual annual fundraising events and because we paid for a lot of new equipment for the school earlier in the year, including Google tablets.

With Lockdown No.2 upon us and the shops closed, you will no doubt be doing some Christmas shopping online this year. Please, please visit your chosen retailer via the Easyfundraising website. When you do this, your visit will be logged and your retailer will donate to our school. Just go to Easyfundraising and type the name of the shop you want to buy from first, that'll take you directly to the retailer's website and you shop as normal. It's that easy...

**PLEASE visit [www.easyfundraising.org.uk](http://www.easyfundraising.org.uk) – remember it costs you nothing but will make a huge difference to the PTFA bank balance.**

If you need help, just ask by emailing [victoria@nexusgb.co.uk](mailto:victoria@nexusgb.co.uk)!

- 2) **We urgently need someone who's good with money to be our treasurer.**

It is NOT a time consuming role, but you do need to be organised as you will need to:

- Run monthly bank reconciliation
- Issue cheques to suppliers and to school
- Organise floats for events, collect, count and bank monies raised
- Keep the PTFA up to date with current bank balances and committed spend

The PTFA can't legally run without one, so please could a lovely mum or dad step forward.

Interested? Please contact [ruthhedgehog@hotmail.com](mailto:ruthhedgehog@hotmail.com)

### Unwanted clothes, bags, shoes and linen wanted for fundraising

Thank you to everyone who has donated unwanted clothes so far. If you haven't had time to have a sort out yet, it's not too late, you can drop off more bags on Monday before and after school.

Unwanted clothes, shoes or linen will be accepted in standard bin liner type bags

Many thanks for all you support. **Ruth, Jo, Charlotte & Victoria**

